



Existing louvres oiled and reinstated

Top of bellcote repaired and repointed—repointing proceeding at lower levels.



Bell frame / metalwork treated and painted to match existing



Bell frame / metalwork treated and painted to match existing



Base of bell chamber—void filled with masonry, screeded and new lead covering installed (all rotten timber scrapped)

REPAIRS TO BELLCOTE

EUXTON PARISH CHURCH—REPAIRS

Progress Photographs dated 21st October 2021

58040/I



Missing inner wall plate (previous rot?)

**TIMBER INVESTIGATIONS
AND TREATMENT**

Rotten timbers—south east
end of nave



Outer wall plate

East nave copings



Existing foil backed
insulation below
existing stone slates

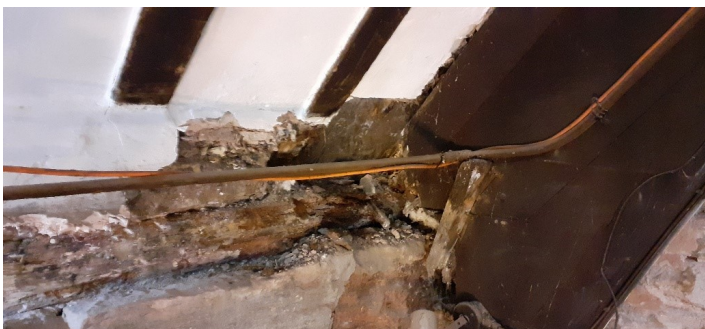


Wall head cleared of
rubble infill

Timber treatment



Investigations and treatment of south nave eaves timbers—proceeding



Rotten eaves timbers—north east corner of nave



Raking out cement mortar—east wall

EUXTON PARISH CHURCH—REPAIRS

Progress Photographs dated 21st October 2021

58040/J